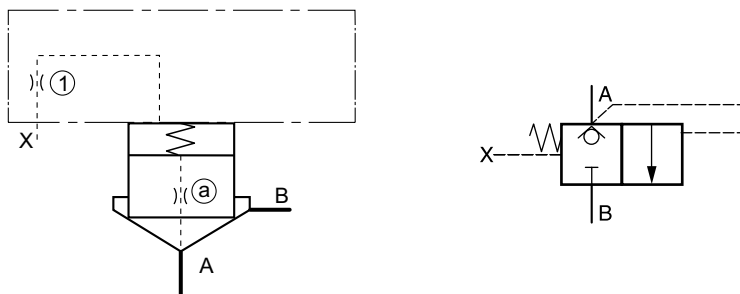


2-way seat valve, flow A ⇒ B



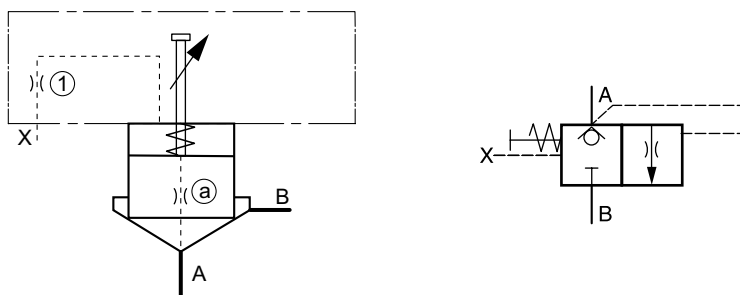
Description	Type							
	NG16	NG25	NG32	NG40	NG50	NG63	NG80	NG100
Cover ¹⁾	C016AA*	C025AA*	C032AA*	C040AA*	C050AA*	C063AA*	C080AA*	C100AA*
Cover orifice ①	1/16xØ0.8	1/16xØ1.0	1/16xØ1.2	1/8xØ1.5	1/8xØ1.8	1/8xØ2.0	1/8xØ2.2	1/8xØ2.5
Cartridge ²⁾	CE016C01*	CE025C01*	CE032C01*	CE040C01*	CE050C01*	CE063C01*	CE080C01*	CE100C01*
Poppet orifice ②	1/16xØ00							
Spring	1.6 bar, type S							
Bolt kit cover	BK414 4x M8x40	BK391 4x M12x50	BK415 4x M16x55	BK416 4x M20x70	BK417 4x M20x75	BK418 4x M30x100	BK419 8x M24x120	BK509 8x M30x130

¹⁾ Complete type see ordering code C*A.
²⁾ Complete type see ordering code CE*.

Shown orifice Ø and springs are recommendations.
 xxØ00 = closed bottom NG16 - NG50, plug NG63 - NG100
 xxØ99 = open

8

2-way seat valve with stroke limiter, flow A ⇒ B

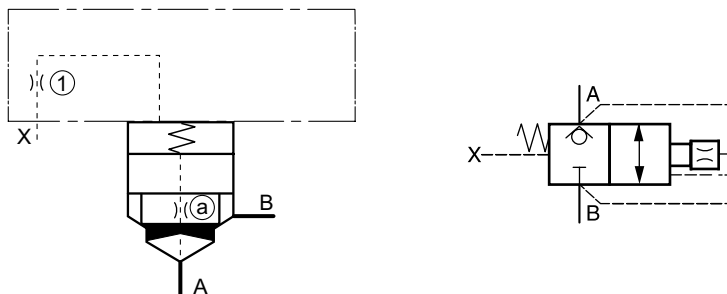


Description	Type							
	NG16	NG25	NG32	NG40	NG50	NG63	NG80	NG100
Cover ¹⁾	C016B**	C025B**	C032B**	C040B**	C050B**	C063B**	C080B**	C100B**
Cover orifice ①	M6xØ0.8	M6xØ1.0	1/16xØ1.2	1/16xØ1.5	1/16xØ1.8	1/8xØ2.0	1/8xØ2.2	1/8xØ2.5
Cartridge ²⁾	CE016C01*	CE025C01*	CE032C01*	CE040C01*	CE050C01*	CE063C01*	CE080C01*	CE100C01*
Poppet orifice ②	1/16xØ00							
Spring	1.6 bar, type S							
Bolt kit cover	BK414 4x M8x40	BK391 4x M12x50	BK415 4x M16x55	BK416 4x M20x70	BK417 4x M20x75	BK418 4x M30x100	BK419 8x M24x120	BK509 8x M30x130

¹⁾ Complete type see ordering code C*B.
²⁾ Complete type see ordering code CE*.

Shown orifice Ø and springs are recommendations.
 xxØ00 = closed bottom NG16 - NG50, plug NG63 - NG100
 xxØ99 = open

2-way functions with dampening poppet, flow A ⇌ B

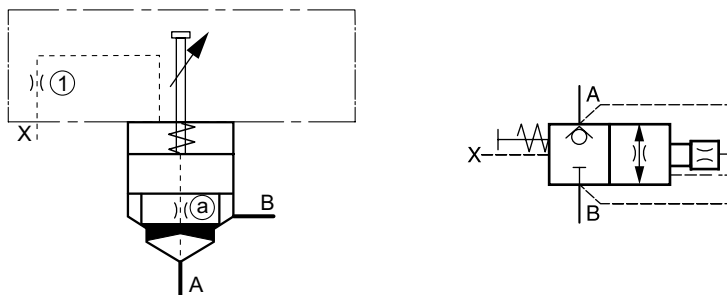


Description	Type							
	NG16	NG25	NG32	NG40	NG50	NG63	NG80	NG100
Cover ¹⁾	C016AA*	C025AA*	C032AA*	C040AA*	C050AA*	C063AA*	C080AA*	C100AA*
Cover orifice (1)	1/16xØ0.8	1/16xØ1.0	1/16xØ1.2	1/8xØ1.5	1/8xØ1.8	1/8xØ2.0	1/8xØ2.2	1/8xØ2.5
Cartridge ²⁾	CE016C08*	CE025C08*	CE032C08*	CE040C08*	CE050C08*	CE063C08*	CE080C08*	CE100C08*
Poppet orifice (a)	1/16xØ00							
Spring	1.6 bar, type S							
Bolt kit cover	BK414 4x M8x40	BK391 4x M12x50	BK415 4x M16x55	BK416 4x M20x70	BK417 4x M20x75	BK418 4x M30x100	BK419 8x M24x120	BK509 8x M30x130

¹⁾ Complete type see ordering code C*A.
²⁾ Complete type see ordering code CE*.

Shown orifice Ø and springs are recommendations.
 xxØ00 = plug
 xxØ99 = open

2-way functions with stroke limiter and dampening poppet, flow A ⇌ B



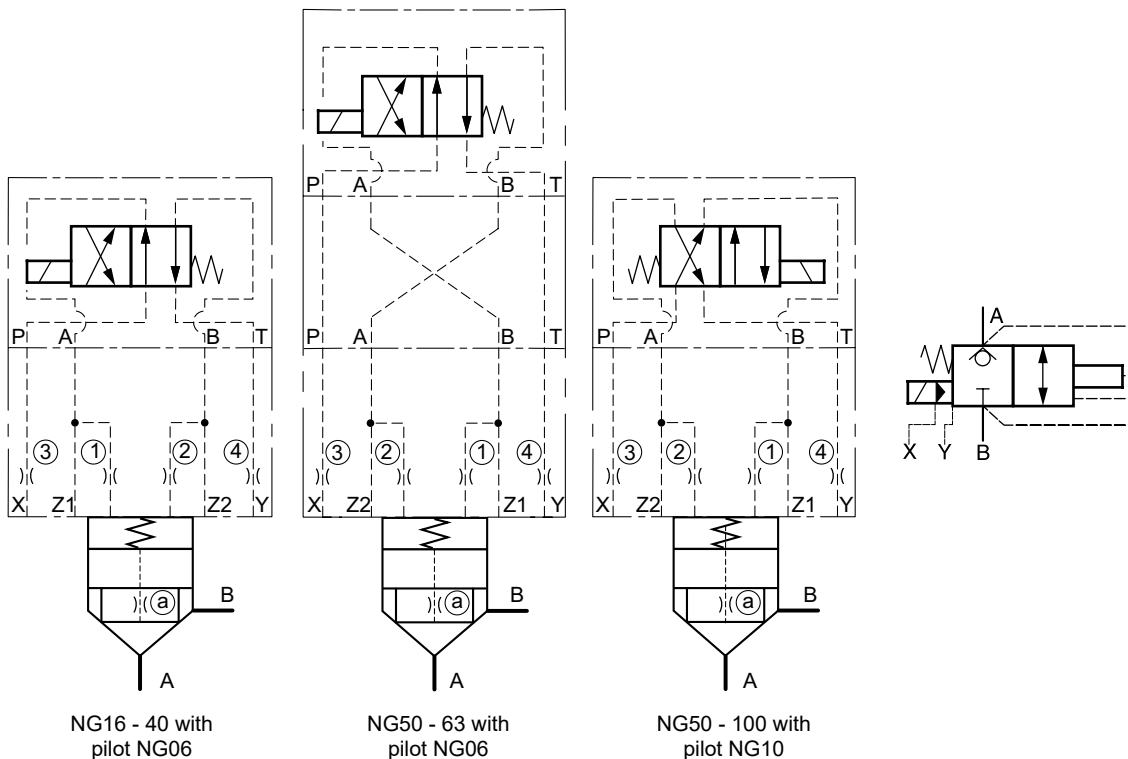
Description	Type							
	NG16	NG25	NG32	NG40	NG50	NG63	NG80	NG100
Cover ¹⁾	C016B*	C025B*	C032B*	C040B*	C050B*	C063B*	C080B*	C100B*
Cover orifice (1)	M6xØ0.8	M6xØ1.0	1/16xØ1.2	1/16xØ1.5	1/16xØ1.8	1/8xØ2.0	1/8xØ2.2	1/8xØ2.5
Cartridge ²⁾	CE016C08*	CE025C08*	CE032C08*	CE040C08*	CE050C08*	CE063C08*	CE080C08*	CE100C08*
Poppet orifice (a)	1/16xØ00							
Spring	1.6 bar, type S							
Bolt kit cover	BK414 4x M8x40	BK391 4x M12x50	BK415 4x M16x55	BK416 4x M20x70	BK417 4x M20x75	BK418 4x M30x100	BK419 8x M24x120	BK509 8x M30x130

¹⁾ Complete type see ordering code C*B.
²⁾ Complete type see ordering code CE*.

Shown orifice Ø and springs are recommendations.
 xxØ00 = plug
 xxØ99 = open



2-way seat valve with pilot, normally closed, flow A ⇌ B



8

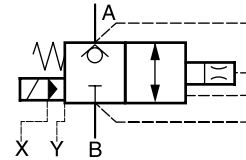
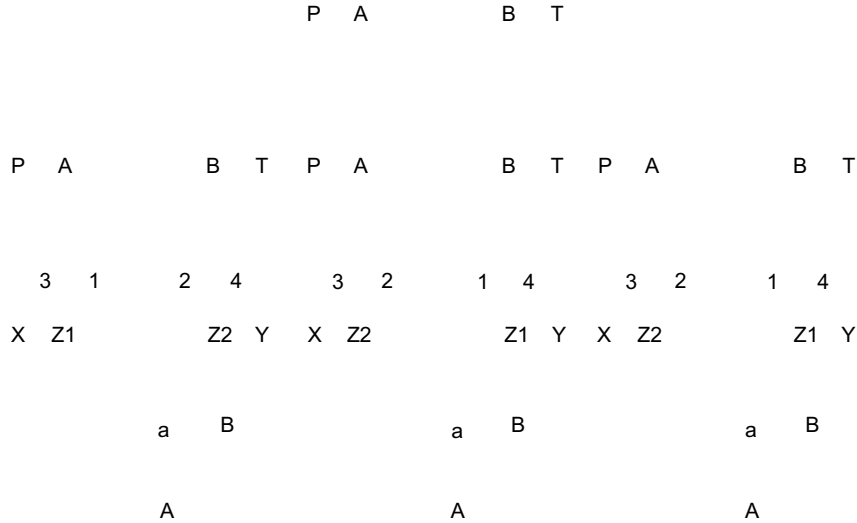
Adaptor plates see chapter 12.

Description	Type									
	Pilot NG06					Pilot NG10				
	NG16	NG25	NG32	NG40	NG50	NG63	NG50	NG63	NG80	NG100
4/2-DC valve ¹⁾	D1VW20B*					D3W20H*				
Adaptor plate ²⁾	without					PADA1007/A-B/B-A				
Cover ³⁾	C016CA*	C025CA*	C032CA*	C040CA*	C050CA*	C063CA*	C050CA*	C063CA*	C080CA*	C100CA*
Cover orifice ①	M5xØ0.8	M5xØ1.0	M5xØ1.2	M5xØ1.5	M6xØ1.8	M6xØ2.0	M6xØ1.8	M6xØ2.0	1/16xØ2.2	1/16xØ2.5
Cover orifice ②	M5xØ00					M6xØ00				
Cover orifice ③	M5xØ1.0	M6xØ1.2	M6xØ1.5	M6xØ1.8	M8xØ2.0	M8xØ2.2	M8xØ2.0	M8xØ2.2	M10x1xØ2.5	M10x1xØ3.0
Cover orifice ④	M5xØ99	M6xØ99			M8xØ99C			M10x1xØ99		
Cartridge ⁴⁾	CE016C04*	CE025C04*	CE032C04*	CE040C04*	CE050C04*	CE063C04*	CE050C04*	CE063C04*	CE080C04*	CE100C04*
Poppet orifice (a)	1/16NPTxØ00									
Spring	1.6 bar, type S									
Bolt kit cover	BK414 4x M8x40	BK391 4x M12x50	BK415 4x M16x55	BK416 4x M20x70	BK417 4x M20x75	BK418 4x M30x100	BK419 8x M24x120	BK509 8x M30x130	BK419 8x M24x120	BK420 8x M30x140
Bolt kit pilot	BK375 4x M5x30					BK385 4x M6x40				

¹⁾ Complete type see chapter "Directional Control Valves", series D1VW, D3W.
²⁾ NG10-NG06 inclusive O-rings and mounting bolts.
³⁾ Complete type see ordering code C*.
⁴⁾ Complete type see ordering code CE*.

Shown orifice Ø and springs are recommendations.
 xxØ00 = closed bottom NG16 - NG50, plug NG63 - NG100
 xxØ99 = open

2-way seat valve with pilot and dampening poppet, normally closed, flow A ⇌ B



NG16 - 40 with pilot NG06

NG50 - 63 with pilot NG06

NG50 - 100 with pilot NG10

Adaptor plates see chapter 12.

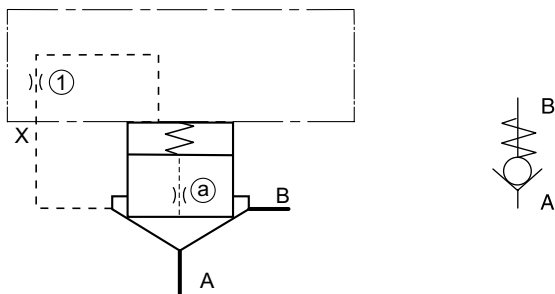


Description	Type									
	Pilot NG06					Pilot NG10				
	NG16	NG25	NG32	NG40	NG50	NG63	NG50	NG63	NG80	NG100
4/2-DC valve ¹⁾	D1VW20B*					D3W20H*				
Adaptor plate ²⁾	without				PADA1007/A-B/B-A		without			
Cover ³⁾	C016CA*	C025CA*	C032CA*	C040CA*	C050CA*	C063CA*	C050CA*	C063CA*	C080CA*	C100CA*
Cover orifice ①	M5xØ0.8	M5xØ1.0	M5xØ1.2	M5xØ1.5	M6xØ1.8	M6xØ2.0	M6xØ1.8	M6xØ2.0	1/16xØ2.2	1/16xØ2.5
Cover orifice ②	M5xØ00				M6xØ00		1/16xØ00			
Cover orifice ③	M5xØ1.0	M6xØ1.2	M6xØ1.5	M6xØ1.8	M8xØ2.0	M8xØ2.2	M8xØ2.0	M8xØ2.2	M10x1xØ2.5	M10x1xØ3.0
Cover orifice ④	M5xØ99	M6xØ99			M8xØ99C		M10x1xØ99			
Cartridge ⁴⁾	CE016C08*	CE025C08*	CE032C08*	CE040C08*	CE050C08*	CE063C08*	CE050C08*	CE063C08*	CE080C08*	CE100C08*
Poppet orifice ⑤	1/16NPTxØ00									
Spring	1.6 bar, type S									
Bolt kit cover	BK414 4x M8x40	BK391 4x M12x50	BK415 4x M16x55	BK416 4x M20x70	BK417 4x M20x75	BK418 4x M30x100	BK419 8x M24x120	BK509 8x M30x130	BK419 8x M24x120	BK420 8x M30x140
Bolt kit pilot	BK375 4x M5x30					BK385 4x M6x40				

¹⁾ Complete type see chapter "Directional Control Valves", series D1VW, D3W.
²⁾ NG10-NG06 inclusive O-rings and mounting bolts.
³⁾ Complete type see ordering code C*.
⁴⁾ Complete type see ordering code CE*.

Shown orifice Ø and springs are recommendations.
 xxØ00 = plug
 xxØ99 = open

Check valve, flow A ⇒ B



Description	Type							
	NG16	NG25	NG32	NG40	NG50	NG63	NG80	NG100
Cover ¹⁾	C016AA*	C025AA*	C032AA*	C040AA*	C050AA*	C063AA*	C080AA*	C100AA*
Cover orifice ①	M5xØ99				M6xØ99		1/16xØ99	
Cartridge ²⁾	CE016C01*	CE025C01*	CE032C01*	CE040C01*	CE050C01*	CE063C01*	CE080C01*	CE100C01*
Poppet orifice ②	1/16NPTxØ00							
Spring	1.6 bar, type S							
Bolt kit cover	BK414 4x M8x40	BK391 4x M12x50	BK415 4x M16x55	BK416 4x M20x70	BK417 4x M20x75	BK418 4x M30x100	BK419 8x M24x120	BK509 8x M30x130

¹⁾ Complete type see ordering code C*A.
²⁾ Complete type see ordering code CE*.

Shown orifice Ø and springs are recommendations.
 xxØ00 = closed bottom NG16 - NG50, plug NG63 - NG100
 xxØ99 = open